

## RADIO CONCERT RECEIVER, MODEL AR-1375



A High Grade Crystal Receiver of superior workmanship

Operates on all practical wavelengths of amateur and broadcast stations

Wavelengths 170 to 2650 meters

**T**HIS receiver was designed by the Wireless Specialty Apparatus Co. to fill the need for a high-class crystal receiver covering a wavelength range of 170 to 2650 meters, thus permitting the reception of broadcasted concerts as well as daily time signals sent by Arlington (Radio, Va.) on a wavelength of 2500 meters. The entire unit is built in an artistically finished metal case, having a bakelite dilecto front panel. The set is sold complete with a pair of highly sensitive telephone receivers.

#### Wave Changing Switch

A wave change switch having three positions is mounted on the left hand side of the panel, providing three distinct wavelength ranges; 170-410, 350-965, 925-2650 meters. Variations between the lower and upper portions of these three ranges can easily be obtained by manipulating the tuning knob found in the center of the front panel.

The tuning knob is provided with an indicator which moves over a graduated dial engraved directly upon the front panel itself.

This knob is used to bring in desired, and to cut out undesired stations.

The crystal detector employed with this outfit is mounted directly on the front panel and is of the "catwhisker" type, provided with a very sensitive crystal.

#### Binding Post Feature

The binding posts on this outfit are of unique design. To connect external wires, it is merely necessary to push down on the top, insert the end of a wire and then release the top. The wire is then automatically held in place by a strong tension spring. This type of post is the simplest and most effective brought out to date.

The receiver is provided with a metal cover which is held in place by two snap catches. One end of the receiver case is removable and forms a suitable receptacle for the telephone receivers when the set is not in use, or when it is being carried about.

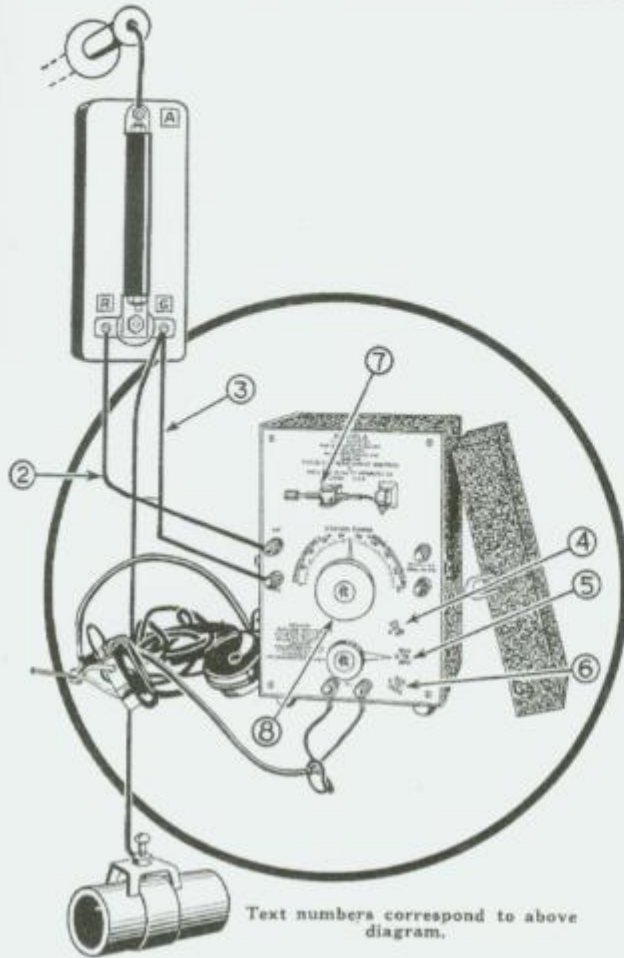
An added feature of Receiver AR-1375 is that provisions are made to connect a vacuum tube amplifier unit for loud speaker operation.

### OPERATING INSTRUCTIONS FOR RADIO CONCERT RECEIVER MODEL AR-1375

#### Numbers Correspond to Diagram

- No. 1. First, refer to accompanying sketch, then erect antenna and place protective device in position as described on page 56.
- No. 2. Connect a wire leading from terminal marked R on protective device to binding post marked ANT.
- No. 3. Connect a wire leading from terminal G on protective device to terminal marked GND on receiver. Connect telephone cord tips to terminals marked TEL.
- No. 4. For wavelengths between 170-410 meters, place wave change switch at point A. Most broadcasting reception will be heard with the switch in this position.

OPERATING INSTRUCTIONS (Continued)



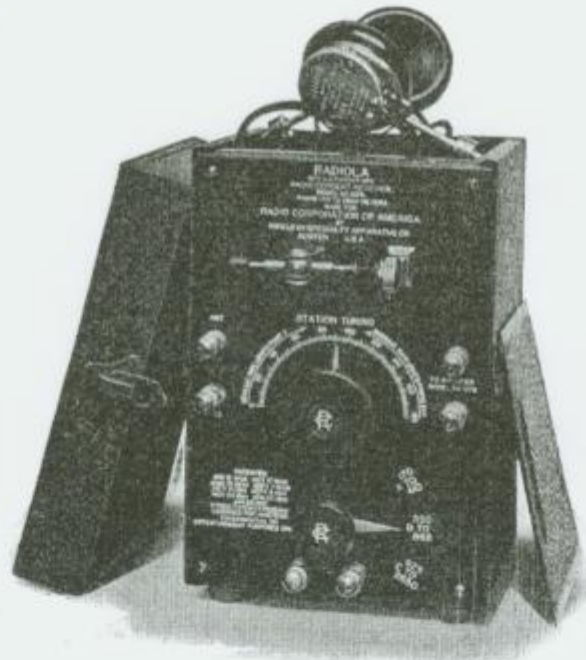
Text numbers correspond to above diagram.

No. 7. After wave change switch has been set for the desired wavelength range, adjust detector by pulling movable spring-point away from crystal and then allowing it to come in contact again at various points. While making this adjustment, rotate tuning knob (8) slowly over the scale, listening until sound is heard in the telephone receivers. Temporarily stop adjustment of detector and manipulate tuning knob until maximum sound is obtained. Leave tuning knob in this position and readjust detector. After a short time the operator will become skillful in finding delicate adjustments on this crystal detector. Once the detector is properly set various stations may be heard by simply rotating the tuning handle over scale.

Note: A black deposit sometimes forms on detector crystals, decreasing the sensitivity of the set. This deposit may be scraped off lightly with a penknife.

No. 5. For stations between 350 and 965 meters, turn wave change switch to point B. This range includes commercial stations, radio compass stations and many Naval stations.

No. 6. For wavelengths between 925 and 2650 meters turn wave change switch to point C. This range includes Naval stations and special commercial stations, as well as Arlington (Radio, Va.).



Radiola AR-1375 is portable, rugged and remarkably sensitive. The Ideal Receiver for all around work.

Complete Radio Concert Receiver, Model AR-1375, 170-2650 Meters, with Head Telephone Receivers, Spare Crystals, Antenna Equipment and Full Instructions . . . . \$47.50  
 Radio Concert Receiver, Model AR-1375, as above, less Antenna Equipment . . . . . 40.00  
 Dimensions—9¾ in. x 7 in. x 7 in.  
 Weights—Net, 7 lbs., Shipping, 12 lbs. With Antenna Equipment, 18 lbs.  
 Note—For prices of other Complete Receiver Combinations see page 35.